

PART OF S 1/2, SEC. 33, T.7N., R.2W., S.L.B. & M.

PLAIN CITY

LOTS 1, 2 & 20 TO 23, PLAT B

TAXING UNIT: 21,339,434

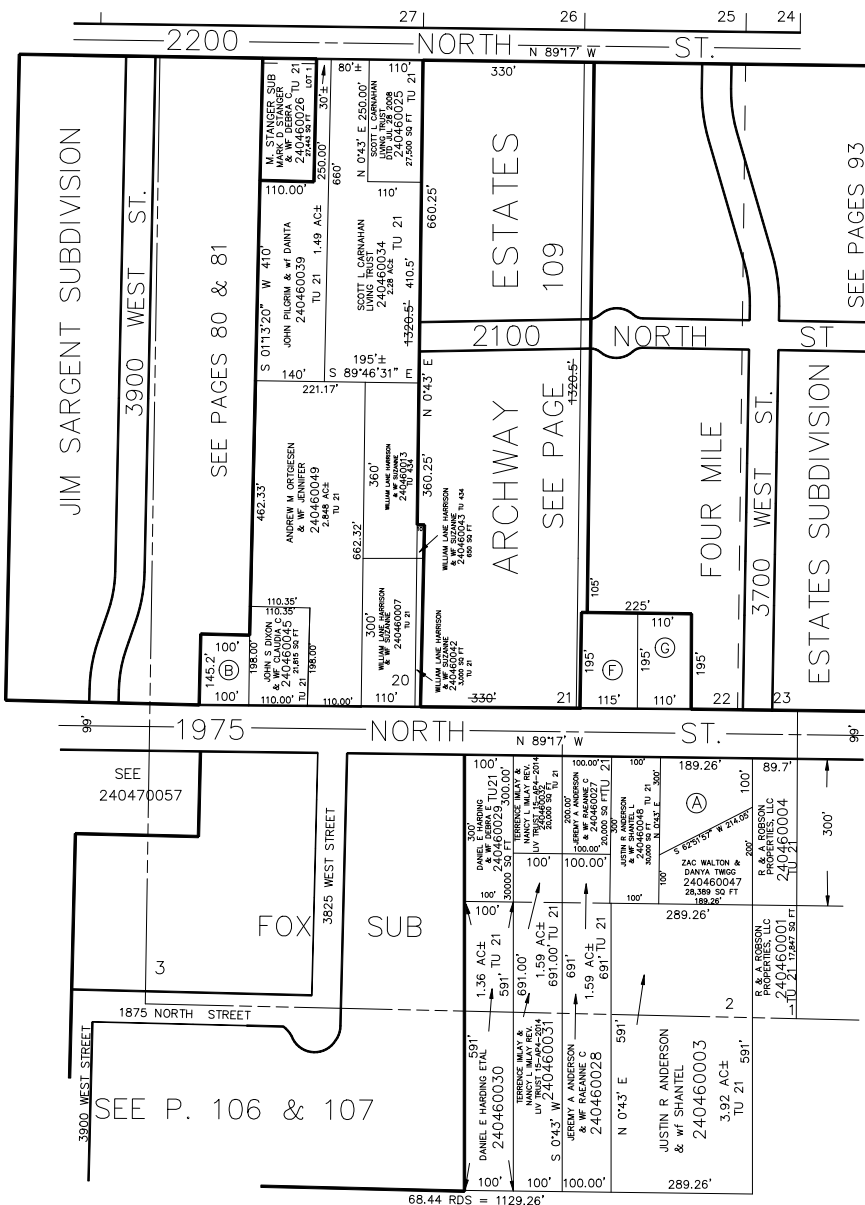
SCALE 1" = 200'

SEE PAGE 50

SEE PAGE 47

SEE BOOK 19  
PAGE 35

SEE ORIGINAL DEDICATION  
PLAT OF PLAIN CITY IN  
BOOK 5, PAGE 80 OF RECORDS.



SEE BOOK 15  
PAGE 10